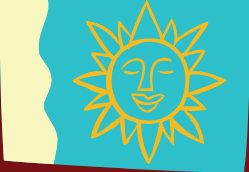


**MAY/JUNE
2007**



Phoenix Crane Rental ❖ Dixie Erectors ❖ Northeast Georgia Crane ❖ Phoenix Rigging & Erecting

The "Booming News"

May Birthdays...

Cody Baldree	5/01
Troy Collier	5/06
Mike Rae	5/07
Rodolfo Tello	5/08
Kay Grainger	5/10
Dick Phillips	5/13
Craig Pierce	5/14
Juan Ramirez	5/14
Anastacio Campos	5/15
Tommy Satterfield, Jr.	5/18
Orlando Hoopo	5/20
Ruben Ramirez	5/20
Bruce Odum	5/20
Mike Cunningham	5/21
Jeremy Kelly	5/21
Tim Baker	5/28
Wes Allen	5/31
Harold Baker	5/31

June Birthdays...

Manuel Campos	6/02
Jose Rivera	6/02
Rutilio Bustos	6/05
James Johnson	6/05
Jose Mendez	6/05
Cecilio Martinez	6/06
Jesus Oliver	6/06
Brian Mayberry	6/07
Ray Provost	6/09
Leon Primitivo	6/10
Mal Cody Dinges	6/11
John Frieberger	6/11
Darrell Campbell	6/14
Andy Ginn	6/26



Employment Anniversaries...

May

A.J. Jackson	5/10	13 years
Wilfredo Marty	5/18	13 years
Jeremy Briggs	5/15	10 years
Julio Quiroz	5/04	7 years
Logan Hurt	5/22	5 years
Adam Jacobik	5/22	5 years
Brad Baker	5/01	3 Years
Tim Baker	5/01	3 years
Harold Baker	5/01	3 years
Tommy Satterfield Jr.	5/19	3 years
Robert Lamb	5/26	3 years
Alicia Lewis	5/01	1 year
Mandi Coddington	5/08	1 year
Matt Doster	5/08	1 year

June

Alvin "Crabman" Gilliard	6/10	13 years
Sonny Burmaster	6/19	12 years
Steve King	6/10	11 years
Modesto DeLa Torre	6/27	7 years
Luis Jimenez	6/25	6 years
Ray Provost	6/13	2 years
Pascual Quiroz	6/08	1 year
Troy Collier	6/09	1 year
Francisco Rosas	6/26	1 year



Fall Statistics...

Falls are the number one cause of fatalities in the construction industry.

150-200 workers are killed each year and more than 100,000 injured as a result of falls.

Overall (including general industry) falls are the number two biggest cause of fatalities in the U.S. (motor vehicle accidents are number one).

- ❖ 40% of the fatalities were from heights over 40 feet
- ❖ Most falls occur on scaffolds or roofs
- ❖ 25% of fall fatalities were from heights of 11-20 feet
- ❖ 25% of fall fatalities were from heights of 20-30 feet

Physics of a Fall....

A body in motion (free fall) can cover vast distances in a short period of time. Consider this:

- ❖ A body in free fall can travel 4 ft in 0.5 seconds
- ❖ A body in free fall can travel 16 ft. in 1 second

A body in free fall can travel 64 ft. in 2 seconds



DIXIE ERECTORS & PHOENIX RIGGING

**100%
Fall Protection**

OUR WAY OF LIFE!

HR CONNECTION

By Maritza Diaz, Human Resources Manager

Annual Enrollment

Please keep in mind that Annual Enrollment for your 401K plan, health and dental insurance is coming up on July 1st. In June you will receive all the information you need to make the appropriate decisions for these plans. If you have any questions regarding your current benefits, please call me or come in to see me.

EMPLOYEE BENEVOLENT FUND (Phoenix Crane & Phoenix Rigging Employees)

If you participate in the Employee Benevolent Fund, please remember that whenever you need to draw against the fund, there is a form to be completed and approved by a majority of the fund committee before you can receive the weekly amount due through payroll. It is YOUR responsibility to get the form into this office APPROVED. We will not call the committee members to get approval. You call the committee members, get their approval/denial and have one of them call either Karen, Kris or Maritza with the OK to pay. Until the committee acts, you will not be paid.

This is YOUR fund, we only keep the records of receipt and payment of funds. We do not control who gets paid, or how the forms are processed.

Just a reminder for anyone not participating, the Phoenix Crane employees have a fund set up which allows any participant, after 10 weeks of consecutive participation, to be paid \$300 per week whenever you are unable to work for any reason, including the waiting period for a Workers Comp claim.

Full details are available in the HR Department.



ACCIDENT REPORTS: Reported by OSHA

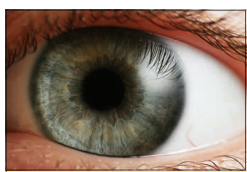
Lack of Fall Protection Leads to Three Deaths

Case 1: A hospital was being renovated and an additional structure attached. Two employees were working from an existing portion of the roof, moving sections of angle iron measuring 20 feet in length. The first employee bent over to pick up one end of an angle iron, and was expecting the other employee to pick up his end. When that did not occur, the first employee looked up and saw the victim standing, bent at the waist, with his hands on his knees. He was 6-12 inches from the edge of the roof, and did not respond when called to, but instead fell head first over a 10-inch parapet wall. He landed on the asphalt driveway and sustained trauma to the back of the head, as well as contusions to the right eye and torso. Based on the height of the roof and the employees' proximity to the edge, some form of fall protection should have been used. The victim died four hours after the accident.

Case 2: During steel erection, an employee was walking on a 5½-inch-wide steel beam that was over 37 feet above dry soil. He was not using fall protection. The beam apparently wobbled, and the employee lost his balance and fell to his death.

Case 3: Without any kind of fall protection, an employee was walking atop structural steel to check joints and bolts. He apparently slipped or misjudged his footing and fell approximately 20 feet to the concrete floor below, resulting in his death.

English/Spanish Construction Terms	
Anchorage	Anclaje [an-KLA-he]
Asbestos	Asbesto [as-BES-tos]
Competent person	Persona competente [per-SO-na kom-pe-TEN-te]
Connector (steel errec-)	Conector de acero estructural [ko-
Cross brace	Cruceta [kru-SET-a], refuerzo transversal [re-FUER-so trans-ver-SAL]
Dee (D) ring	Anillo en forma D [a-NI-yo en FOR-ma]
Dust	Polvo [POL-vo]
Dust mask	Máscara para el polvo [MAS-ka-ra PA-ra el POL-vo]
Erection	Armar [ar-MAR], izar [i-ZAR], levantar [le-VAN-tar], construir [kon-STRUYR]
Fall protection	Protección contra caídas [pro-tek-SYON kon-tra KAI-das]
First aid	Primera ayuda [pri-ME-ra ai-U-da]
Guardrail system	Sistema de barandas [sis-TE-ma de bar-AN-das]
Lanyard	Cuerda de seguridad [KWER-da de se-gu-ri-DAD], cordón [kor-DON], pila [PI-la]
Lifeline	Cuerda salvavidas [KWER-da sal-va-VI-das], cuerda de seguridad [KWER-da de se-gu-ri-DAD]
Unprotected edge	Borde expuesto [BOR-de eks-PWES-to], borde descubierto [BOR-de des-ku-BYER-to]
Warning signs	Avisos de precaución [a-VI-sos de pre-kauw-SYON]
Yard	Yarda [YAR-da]



EYE SAFETY

Safety glasses protect your eyes and will save your sight - if you wear them. They offer no protection in your back pocket, your pickup truck or left at the house. People who wear glasses quickly become used to them. Unfortunately, people who don't wear glasses have never developed these habits. When it comes to eye protection, too often people forget, and safety glasses and goggles grow dusty laying unused.

The most common complaint about eye protection is that it's uncomfortable. That's why such equipment must be carefully fitted. Frames must be light, straight and properly adjusted. The lens size should be correct for the wearer, as should the fit of the bridge of the nose and at the temple.

When your goggles or glasses are dirty, dusty or grimy, they can interfere with your vision - so take time to clean them. Don't touch the lenses with your fingers. never lay goggles or glasses down so the lenses touch something that could scratch or pit them. Store eye protection so that the lenses will be protected. During hot weather, use a sweatband to help keep perspiration off your goggles. Lens "FOG" problems can be eliminated by using an anti-fog preparation. Some people complain that goggles give them a headache. Here again, proper fit is important. Be sure goggles are worn correctly. The head strap on cup goggles should be adjusted for just enough tension to hold them securely and should be worn low on the back of the head.

Eye protection is important off the job as well as on the job. Here are some tips you can use both at work and at home. Study the label and instructions for eye protection before using cleaning products, pesticides, and herbicides. Consult the chemical MSDS sheet for Personal Protective Equipment recommended. Be sure nozzles are directed away from you and hoses are in good condition. Wear goggles to protect your eyes when handling acids and caustics. Keep the tools you use in good repair.

Remember, eye injuries are preventable. Take the time to keep your eyes safe on the job and off the job.



Tips for Increasing Your Gas Mileage...

When driving is the only option; use these tips to help increase gas mileage.

- Don't carry extra weight in the trunk. Get rid of unnecessary items to increase fuel efficiency.
- Drive more slowly. Traveling at 55 mph, rather than 65, increases gas mileage by up to 15 percent.
- Use the car's overdrive if there's an overdrive gear. Overdrive increases engine efficiency. Check the car's manual for more details on how to use overdrive.
- Don't accelerate too quickly and don't slam the brakes. Both actions are gas wasters.
- When waiting, turn off the engine. Long periods of idling waste much more gas than restarting a car.